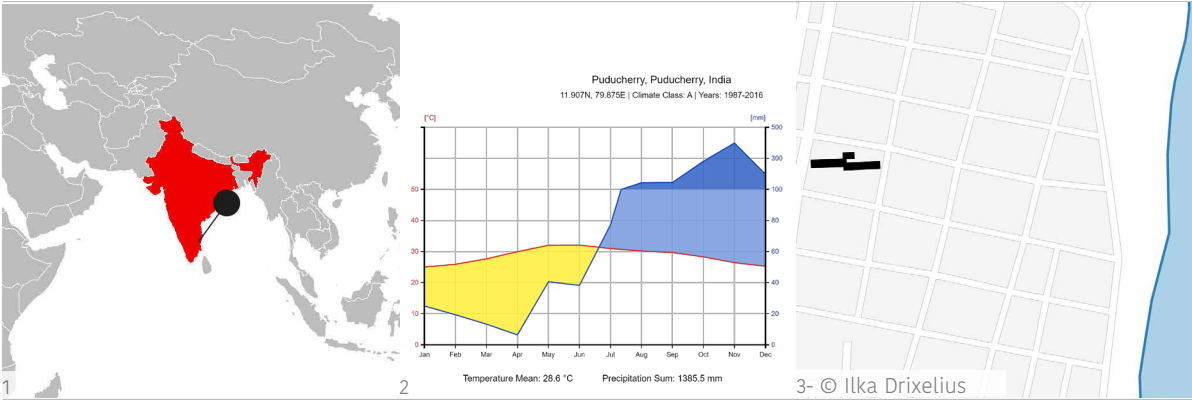
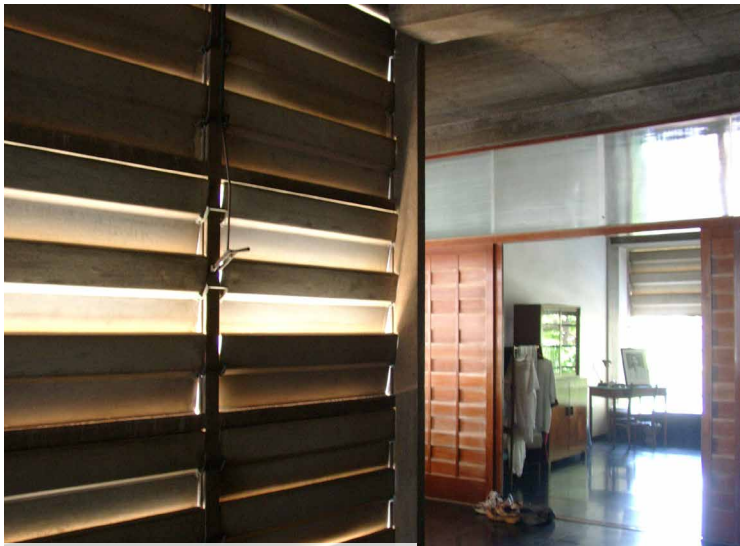


# Golconde

Pondicherry | India  
Antonin Raymond, Francois Sammers, George Nakashima



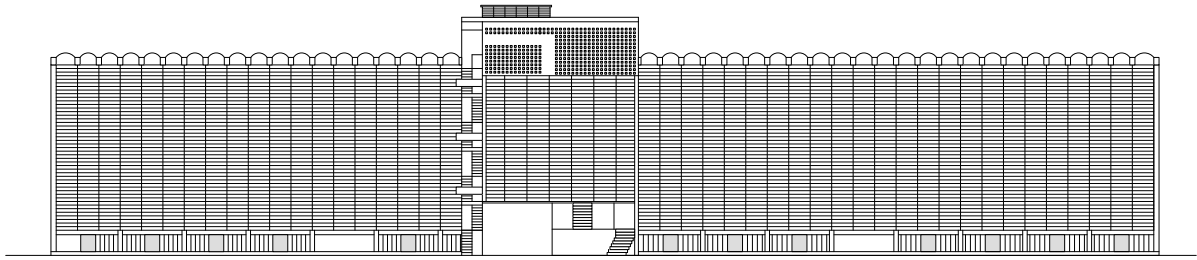
4- © Jürgen Reichardt and Jonas Kerstgens



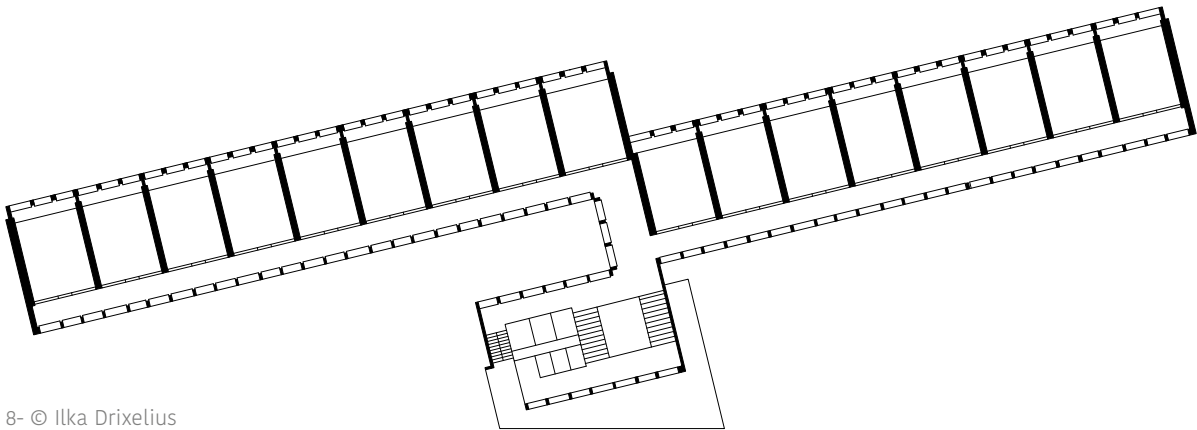
5- © Jürgen Reichardt and Jonas Kerstgens



6- © Jürgen Reichardt and Jonas Kerstgens



7- © Ilka Drixelius



8- © Ilka Drixelius

### Aspects geography | Topography | Vegetation

As the building is located in the equatorial climate of India, the building is facing typhoons, periods of rainy weather and mostly it is exposed to the sun and the hot and damp climate. It is built near to the sea, so that the humidity in this region is constantly high.

### Building volume | Zoning

51 bedrooms are divided over 3 floors, that measure about 70 x 10 metres. The longer facade is oriented to the south-east, which is the most efficient orientation for this climate and the sunpath. The staircase is set into the centre of the building, from where the floor plan spans in to the longer sides.

### Material | Construction | Building techniques

The structure of the building is made of reinforced concrete and is left in its natural appearance. The entire wall surface is covered by operable, horizontal louvers which offer protection against the sun and the rain, but allows ventilation at the same time. Each room is separated from the corridor by sliding doors that allow air to circulate when open. The doors are made out of staggered slats, which allow ventilation even when doors are closed.

The architect designed a building that is capable of transforming regarding to climate conditions without mechanical aids.

## Picture Credits

(1) Robinson. Map of the World - single color. Available from: <https://freevectormaps.com/world-maps?ref=top-nav> [26.06.2020]

(2) ClimateCharts.net. Puducherry, India. Available from: <https://climatecharts.net/> [27.06.2020]

(3) © Ilka Drixelius

(4)-(6) © Jürgen Reichardt and Jonas Kerstgens

(7)-(8) © Ilka Drixelius